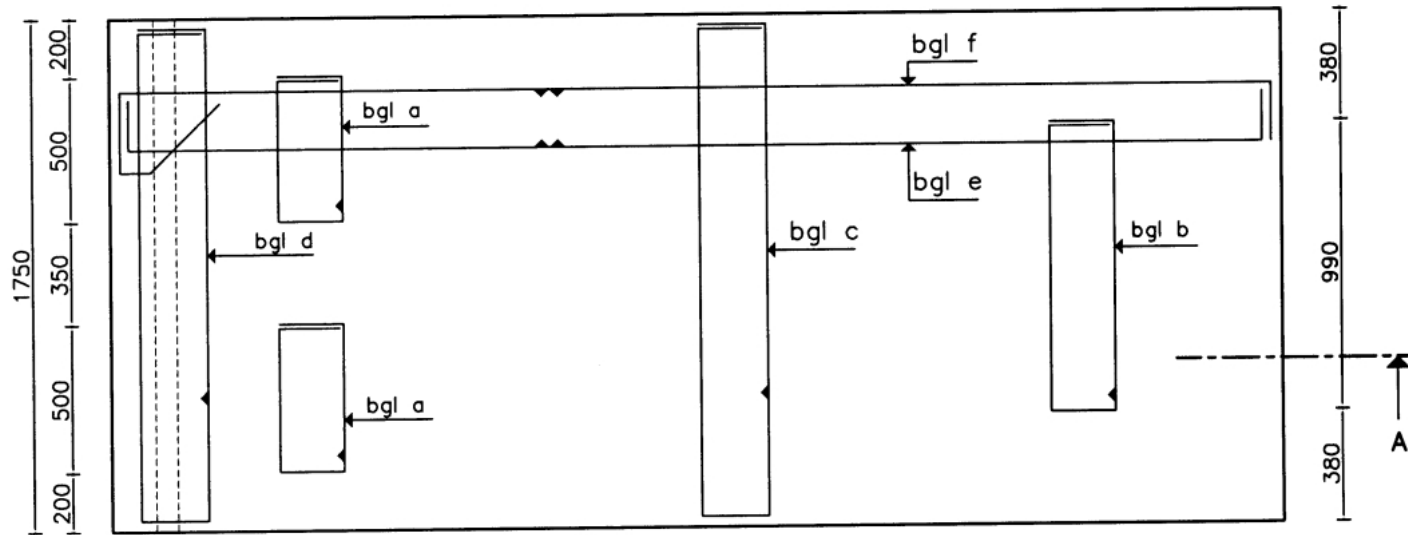
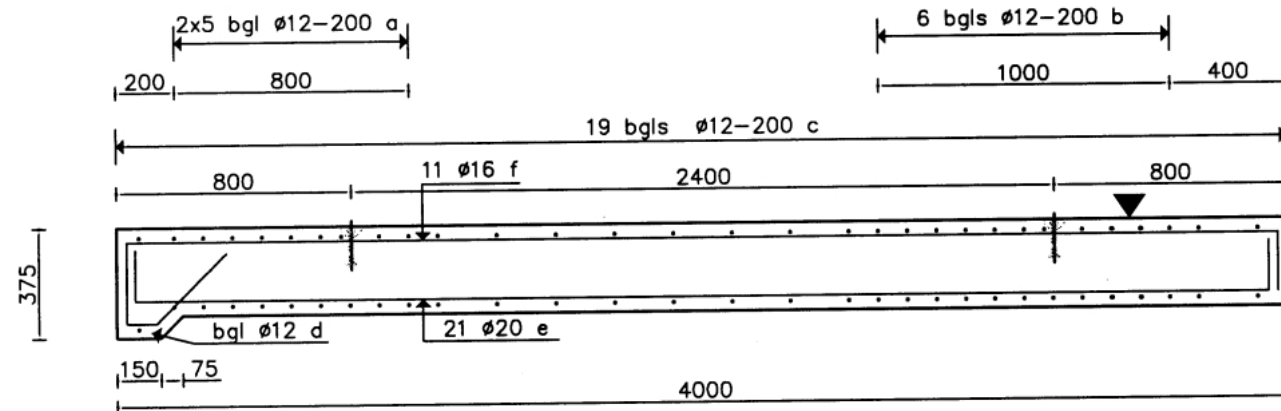


BUIG EN KNIPSTAAT

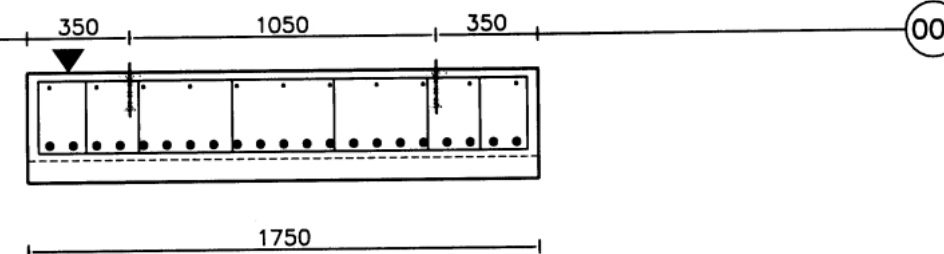
| Aantal | Staal FeB | Ø | merk pos. | Vorm en afmeting staaf of beugel |
|--------|-----------|----|-----------|----------------------------------|
| 10 | HKN | 12 | a | 500x225 |
| 6 | HKN | 12 | b | 990x225 |
| 19 | HKN | 12 | c | 1125x225 |
| 1 | HKN | 12 | d | 1675x300 |
| 21 | HWL | 20 | e | 175x3925 |
| 11 | HWL | 16 | f | 275x135x3925 |



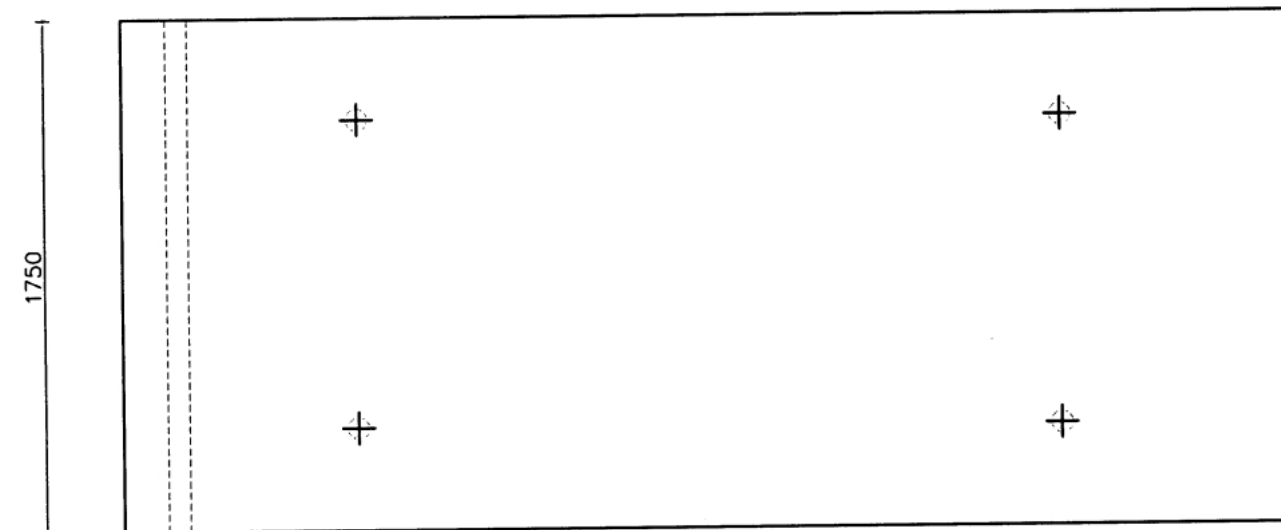
BOVENAANZICHT



ZIJEAANZICHT



DOORSNEDE



BOVENAANZICHT

INSTORT DELEN

| Pos. nr. | Aantal | Omschrijving / benaming |
|----------|--------|------------------------------------------------|
| 001 | 4 | Kogelkophijsanker Type 6000-2,5t x 120mm Th.v. |

| | | | |
|----------------|----------|---------------|---------------------|
| Dekking | 35 mm | | |
| Maat tol. | NEN 2889 | ▼ Stortzijde | |
| Uit mal | Kogelkop | Inhoud | 2125 m ³ |
| Nabehandeling | Geen | Massa | 5100 kg |
| Afw. oppervlak | Vlak | Milieu klasse | 3 |
| Mengsel | 50 | Beton | B 35 |

Omschrijving Stootplaat met oplegkop 4000x1750x300/375



Strukton Prefab

Kobaltweg 61 Postbus 1025 3600 BA Maarssen Telefoon: 030 2425852 Telefax: 030 2425755

| | |
|-----------------|---------------|
| Paraaf | |
| Getekend | A. Campanario |
| Datum | 13-03-2002 |
| Tekening nummer | 8077-- |
| Artikel nummer | 8077-- |